



AnNex
Animal Research Nexus

Welcome to the 'Researching Animal Research' Workshop

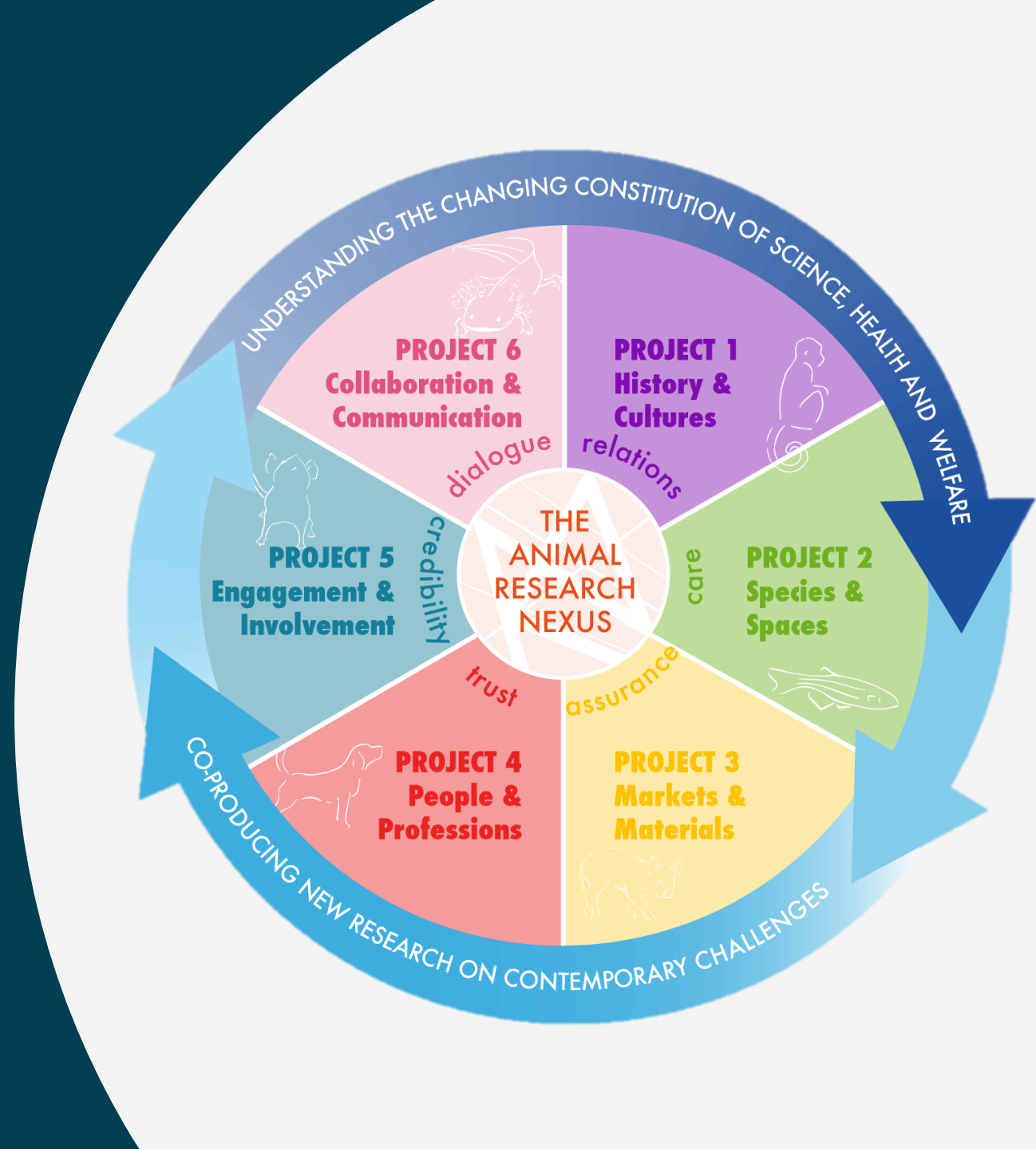
Network: Wellcome Wi-Fi

Select: Registered user

Username: EventSpaces

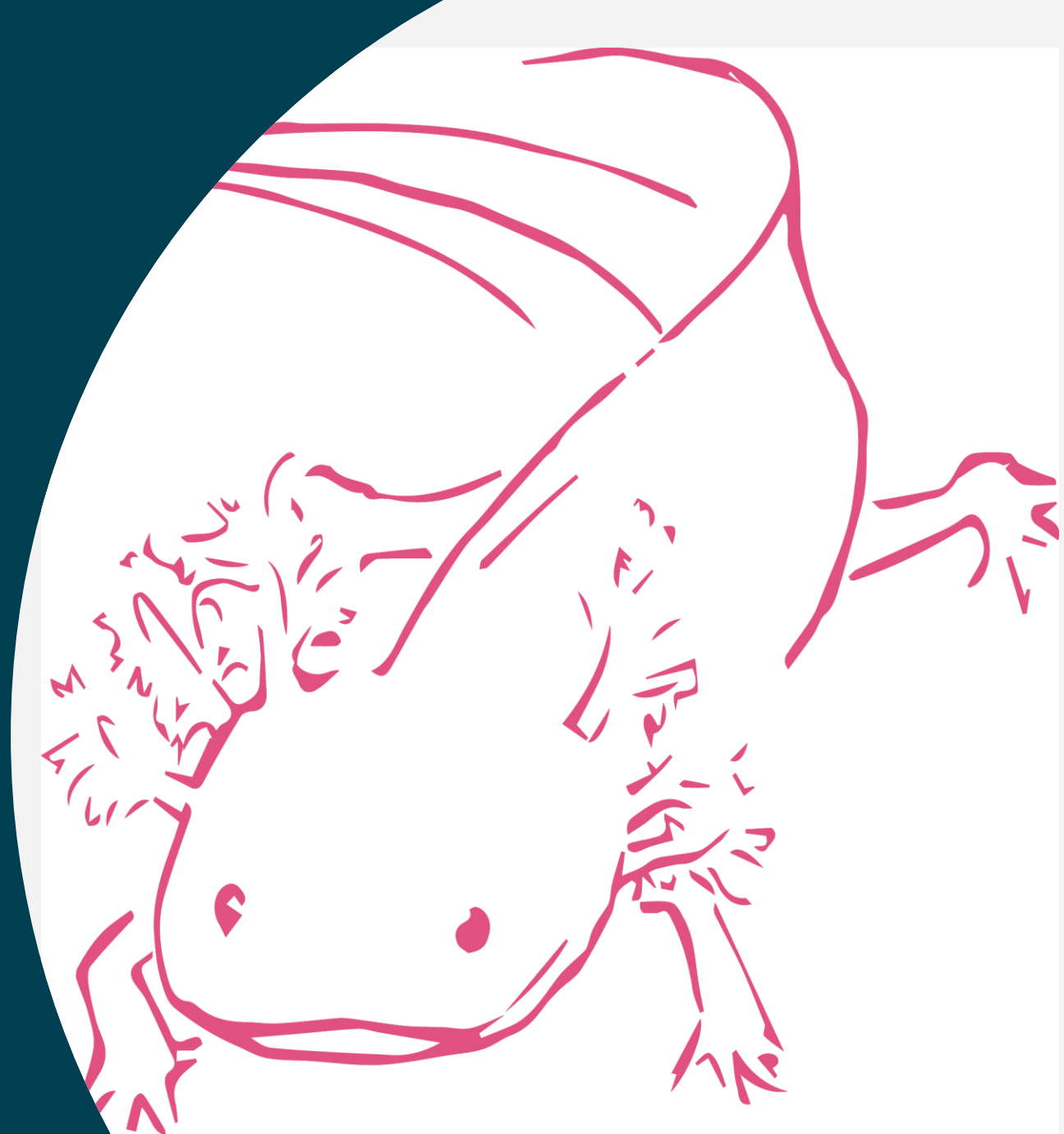
Password: 716945

Conference hashtag: #ResearchingAnimalResearch





Celebrating the Animal Research Nexus



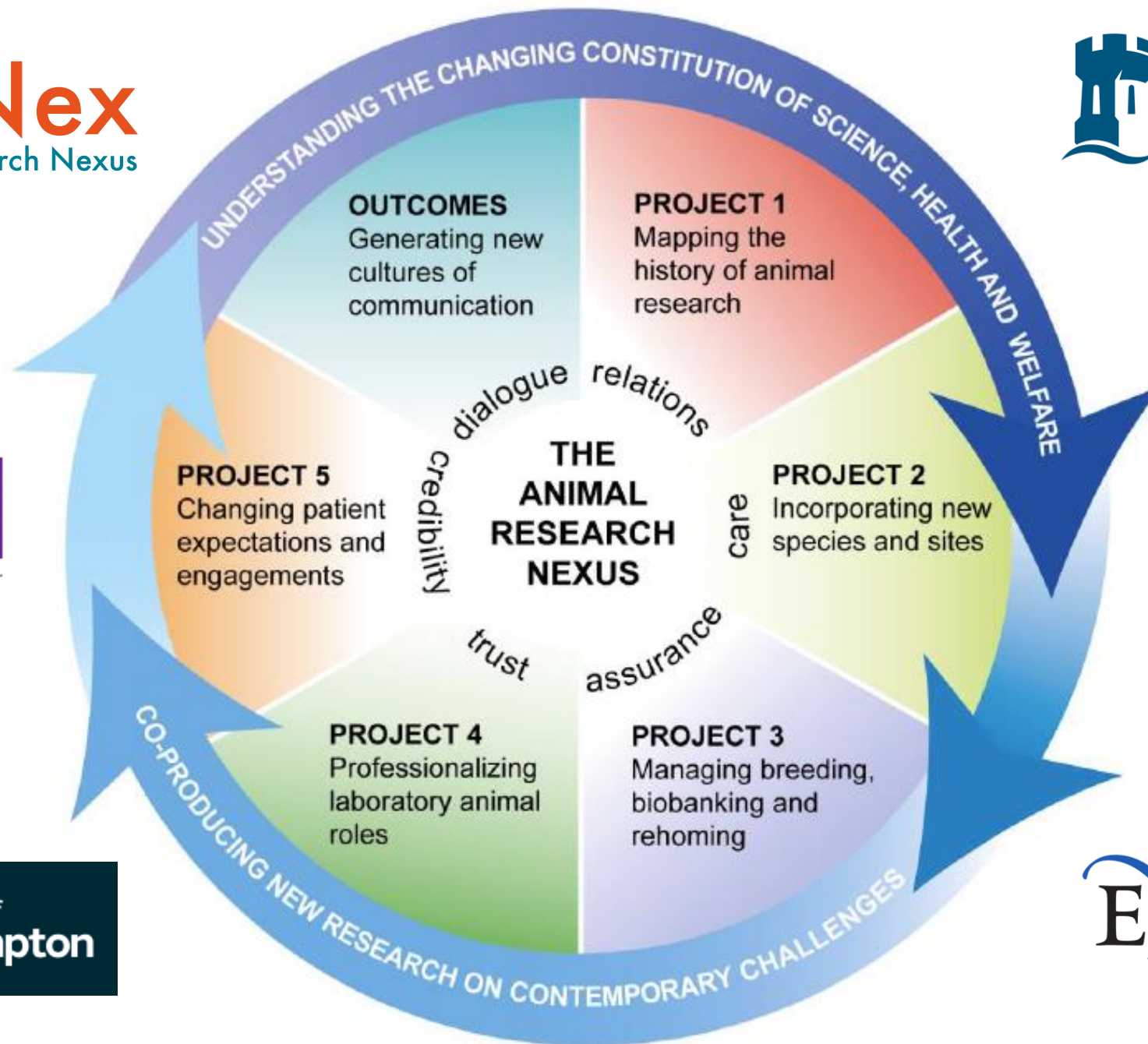
Why Animal Research Nexus?

The **animal research nexus refers to the interrelations between science, health and animal welfare, held together through networks of law, responsibility, trust and care.** Together these have forged broad social acceptance of laboratory animal research in the UK, so long as animal use and suffering are minimized and health outcomes are realized.

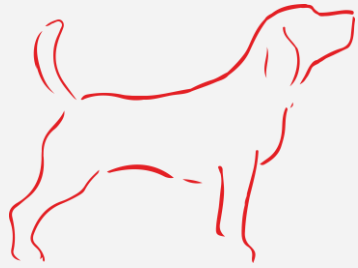
Yet, the recent historical development of these interrelations and the stability of their current constitution remain to be fully understood. Moreover, rapid developments in biomedical science, transformations across health and society, and changes in policy and regulation are raising both new opportunities and challenges.



The University of Nottingham







Making collaboration work...

PUBLISH ABOUT BROWSE

PLOS ONE

OPEN ACCESS PEER-REVIEWED

RESEARCH ARTICLE

Developing a Collaborative Agenda for Humanities and Social Scientific Research on Laboratory Animal Science and Welfare

Gail F. Davies, Beth J Greenhough, Pru Hobson-West, Robert G. W. Kirk, Ken Applebee, Laura C. Bellingan, Manuel Berdoy, Henry Buller, Helen J. Cassaday, Keith Davies, Daniela Diefenbacher, Tone Druglitrø, Maria Paula Escobar, [...], Sarah Wolfensohn



Microsoft Teams



Generating data



MIO
MASS OBSERVATION
Recording everyday life in Britain



Introducing the Animal Research Nexus

A Wellcome Trust Collaborative Award <https://animalresearchnexus.org/>

What is the Animal Research Nexus Programme about?

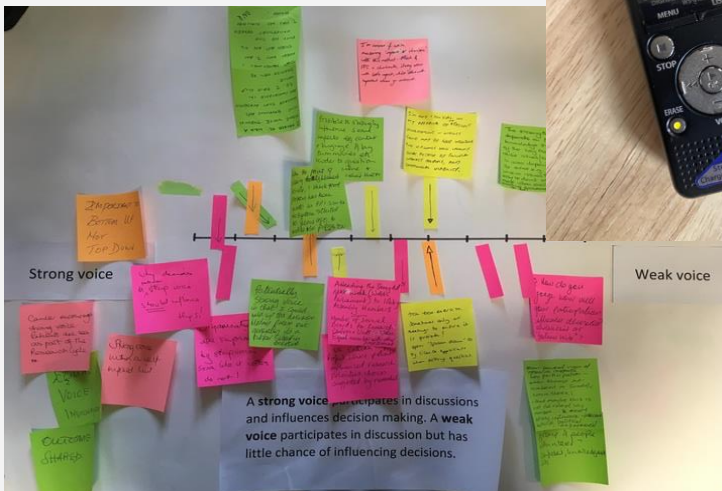
Using animals in research has been critical to the development of modern medicine, generating improvements in human and animal health. Nevertheless, animal research remains controversial, and developments in biomedical science, transformations across health and society, and changes in policy and regulation are raising new opportunities and challenges. Our programme of research seeks to understand the historic and present-day links between science, health, and animal welfare, to identify the emerging challenges to laboratory animal research, and to build new conversations around them.

Our programme has several strands exploring these challenges from different perspectives. We are interested in the histories and current practices which are shaping the kinds of species, places, professional roles, and patient expectations associated with animal research. We have a programme of public and stakeholder engagement that will help develop dialogue around the questions raised. These include: how best to care for novel model organisms; how to consider the ethics of new experimental sites like veterinary practices; how professional roles, identities, and training needs have changed; how to manage the increasingly global networks of animal research, and how to facilitate meaningful patient engagements with animal research.

The aim of this research is to inform academic debates, contribute to the development of policy, and inspire public debate. Research outputs will include academic publications, including books and international journal articles in social sciences and humanities; research reports in policy-relevant journals; short briefings for policy, practitioners, and public audiences; and stakeholder dissemination and public engagement activities.

Who is carrying out the research?

We are a group of 15 researchers from five institutions, with a range of disciplinary backgrounds that include the social sciences, humanities, and veterinary sciences. Many of us have previous experience of working on laboratory animal research. We also all have experience of working with different public and stakeholder groups, including scientists, patients, publics, and policy-makers. We consider our range of experiences and backgrounds is important for understanding the past and current challenges related to animal research.



Shaping academic debate



Animal Research Nexus Programme

Poster Abstracts & Workshop Questions

<https://www.animalresearchnexus.org/>

The Project teams, PhD students, and Creative Facilitator have produced posters with further details about their work. We introduce these posters here. We warmly invite you to consider whether you can contribute to the questions that team members are bringing to this workshop in the poster session or later via email.

UNIVERSITY OF EXETER 15-16 July 2019

Animal Research Unbound

ORGANISMS and US

AnNex Animal Research Nexus

The British Animal Studies Network

CALL FOR PAPERS

'Animal Borderlands'

25 and 26 September 2020 at Keble College, University of Oxford

Confirmed plenary speakers are
 Steve Hinchliffe (University of Exeter)
 Raf de Bont (Maastricht University)
 Marcus Coates (visual artist)

If you are interested in giving a paper addressing the topic 'Animal Borderlands' from whatever disciplinary perspective please submit your title, with an abstract of no more than 200 words and a brief biography (also of no more than 200 words). These should be included within your email – i.e. not as attachments. Please send them to beeb.green@oxfordjournals.org, ruben.messias@ouce.ox.ac.uk, and alexandra.palmer@ouce.ox.ac.uk. The deadline for abstracts is Monday 22 June 2020. Presentations will be 20 minutes long and we hope to include work by individuals at different career stages. Sadly we have no money to support travel, accommodation or attendance costs.

Topics covered at this meeting might include (but are not limited to):

- Categorical borderlands such as between human/animal, life/death, wild/domestic, animal/vegetal, and taxonomic groups.
- Geographical borderlands such as those between nations and urban/wild spaces, and animal migrations.
- Political borderlands, such as between legal and regulatory regimes, and the policing of animal borderlands.
- Biological borderlands such as transitions between phases of development.
- Affective borderlands, such as between being loved and hated.
- Metaphorical borderlands, such as the use of animals as metaphors for human social boundaries.
- Conceptual borderlands, such as those between animal studies and cognate disciplines.

We welcome papers that deal with the theme of 'Animal Borderlands' in both contemporary and historical settings, and would especially like to see papers that address these issues from contexts outside the UK. Papers are welcomed from across animal studies, including disciplines such as (but not limited to) geography, anthropology, sociology, literary studies, art history, history, science and technology studies, ethology, psychology, behavioural sciences and ecology, bioscience/biomedical research.

Further details of the British Animal Studies Network can be found on <http://www.britishtanimalstudiesnetwork.org.uk>



Working with stakeholders

Constructing and contesting veterinary expertise: professionals, publics and prospects

Tue 5 - Thu 7 Jul 2022

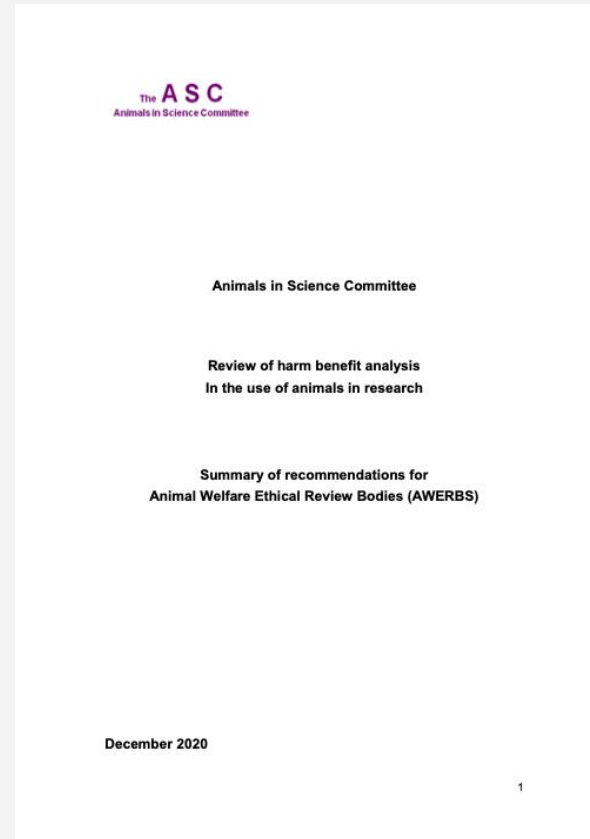
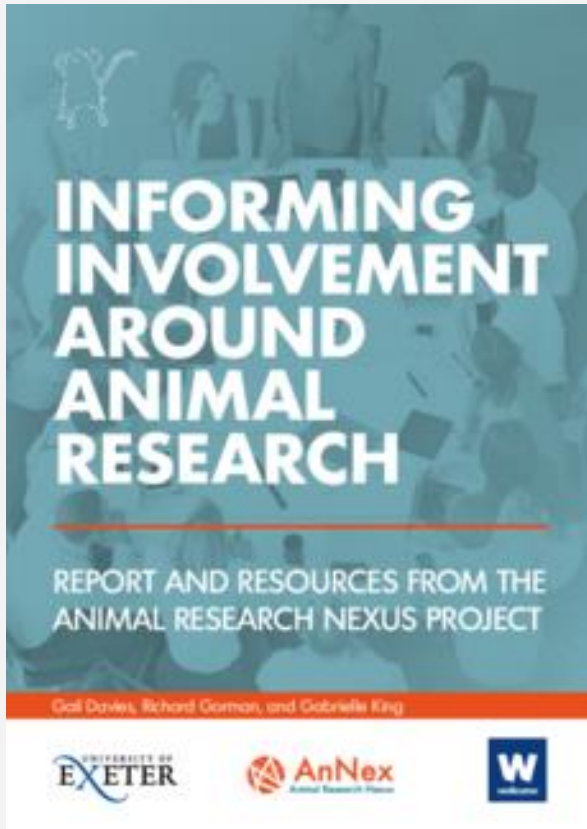
Online event

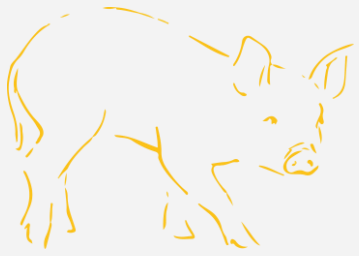
[Contact the events team](#) for further information about accessibility at this event



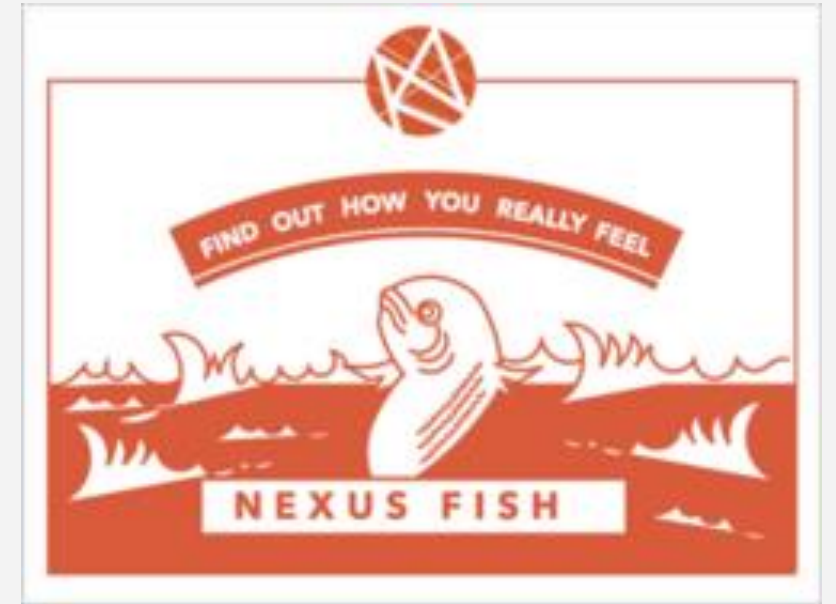
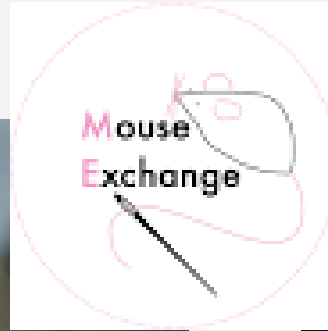


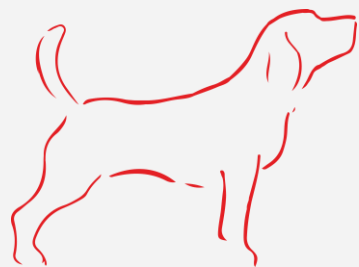
Informing policy and practice





Engaging publics





Leaving a legacy

**UK • DATA
ARCHIVE**



Thank you

